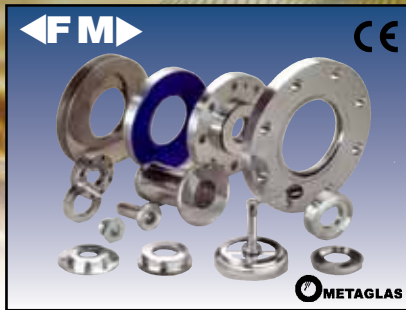


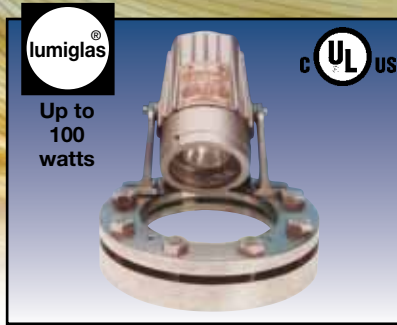
Process Observation Equipment Product Overview

ISO 9001:2000
DATA SHEET 00-0020 1/2012



Metaglas® Windows For Sight Flows and Viewports

A fusion of stainless steel and borosilicate glass, Metaglas® windows provide safety and long life in the most challenging applications. And they are easily removed for cleaning without danger of reinstallation stress failure.



Explosion-Proof UL 844 Luminaire For Hazardous Use

"No Quibbling" explosion-proof UL listed design provides up to 100-W of high-intensity glare-free illumination for sight flow indicators, sight ports or for specific-area lighting. Lumiglas products are manufactured to ISO 9001:2000 standards.



L.J. Star Visual Flow Indicators Are "Simply Better"

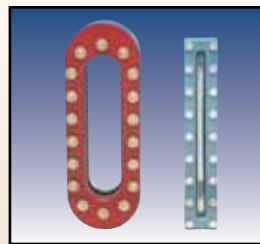
Choose from a full range of view-through or full, 360° view models, flanged or threaded with stainless or coated-carbon steel investment cast bodies. Options include sanitary, lined, corrosion-resistant and Factory Mutual approved designs.



Circular Sight Glass Assembly with weld flange, ready to install. Standard rating to 235 psi at 536°F. Custom designs available.



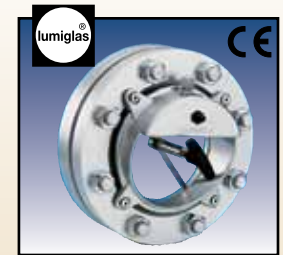
Lumiglas® Sanitary Light Port with MetaClamp® connection available from 1/2". These compact units provide up to 100 watts of light.



Welded Obround & Rectangular Sight Glasses in standard or custom sizes and in carbon steel, stainless or special alloys.



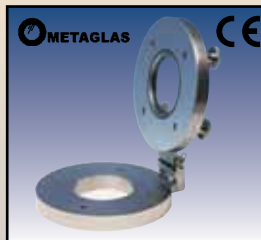
Explosion-Proof LED Light provides years of maintenance-free operation, is impact and vibration resistant and produces no heat inside vessel.



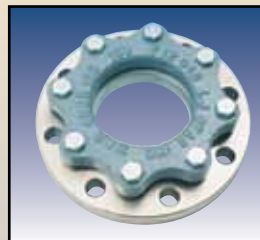
Combined Sight/Light Port with central wiper and Lumistar luminaire for added visibility. Rated up to 85 psi.



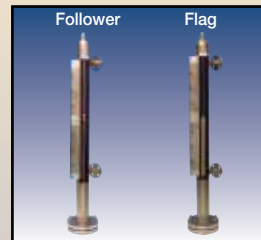
MetaClamp® Sanitary-Clamp windows meet sanitary standards at high pressure and extreme temperatures, safely.



Metaglas® Hinged Window provides quick-opening access for sampling or cleaning, welded or bolt-on, rated up to 150 psi.



Circular Bolt-On Sight Glass Assembly is ready for installation on existing ANSI or DIN standard flanges, 2 to 8-in.



MagneStar™ Magnetic Liquid Level Gages provide safe, non-intrusive, direct or remote reading, level indication.

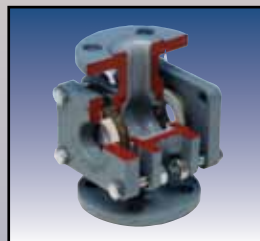


Explosion-Proof UL844 Fiber Optic Light provides high intensity with minimal obstruction. Ideal for sight/light combination.

Explosion-Proof Camera for remote viewing inside vessels in hazardous locations. Available as high resolution color with zoom.



Teflon Lined View-Thru Visual Flow Indicators handle a wide variety of corrosive chemicals; are offered in sizes from 1 to 8 inches.



Sterile Visual Flow Indicator, equipped with clamp connections and USP Class VI o-ring seals. Full view style also available.



Process Observation Specialists

Custom designs are available for special applications.

L.J. STAR
INCORPORATED

P.O. Box 1116
Twinsburg, OH 44087
Applications Engineering Department:
(330) 405-3040 • Fax: (330) 405-3070
E-mail: view@ljstar.com
Website: www.ljstar.com