

Diaphragm-Type Clamped Sanitary Diaphragm Seal Type L990.SD

WIKA Datasheet L990.SD

Applications

- Food & Beverage
- Pharmaceutical Industry
- Hygienic Pressure Media



L990.SD Tank Spud Diaphragm Seal

Standard Features

Design

External, flush diaphragm which requires hydraulic fluid to transmit pressure to measuring instrument

Process Connection

4" Tank Spud

Instrument Connection

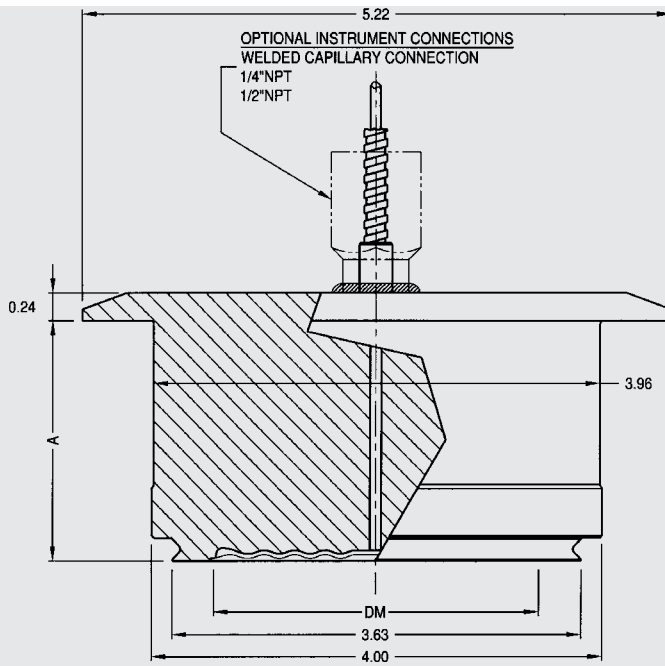
Capillary, 1/4" or 1/2" NPT-female

Suitable Pressure Ranges

15 psi to 600 psi

Available Options (connections, materials, etc.)

See Selection Guide (over)



DM=EFFECTIVE DIAPHRAGM DIAMETER
ALL DIMENSIONS IN INCHES
UNLESS OTHERWISE NOTED

EXTENSION LENGTH	A	DM
2	2.11	2.8
6	6.11	2.8

Selection Guide - Type L990.SD

Type L990.SD, 1/4F, TS, 2, SS, NA

Gasket O-ring
(See note 2)
NA = Without O-ring

Diaphragm Material
SS = 316 stainless steel

Extension Length
2 = 2.0" extension
6 = 6.0" extension

Process Connection
TS = 4" Tank spud seal

Instrument Connection
1/4F = 1/4" NPT female
1/2F = 1/2" NPT female
CPLY = Capillary connection (To weld capillary directly to seal)

Diaphragm Seal Design
Type L990.SD = Tank spud seal

Notes

1. Tank spuds, tank spud plugs and clamps are available, please consult factory.
2. Ethylene propylene rubber and Viton® O-ring is sold separate, please consult factory.

Options not listed may be available, please consult factory.

Fill Fluid & Mounting options: Please reference data sheet ACS 90.MO

Specifications given in this price list represent the state of engineering at the time of printing. Modifications may take place and the specified materials may change without prior notice



WIKA Instrument Corporation
1000 Wiegand Boulevard
Lawrenceville, GA 30043-5868
Tel: 888-WIKA-USA • 770-513-8200
Fax: 770-338-5118
E-Mail: info@wika.com
www.wika.com