



INLINE SEAL™ Diaphragm Seal

Wafer INLINE™ Plastic Diaphragm Seal

Type L981.31

Diaphragm Seals

Application

Process industry diaphragm seal to combine with Bourdon tube pressure gauges or transmitters. Intended for rapidly flowing contaminated or light to medium viscous pressure media.

Design

Body with cylindrical plastic diaphragm to be sandwiched between two pipe flanges. Requires hydraulic fluid to transmit pressure to instrument.

Process Connection

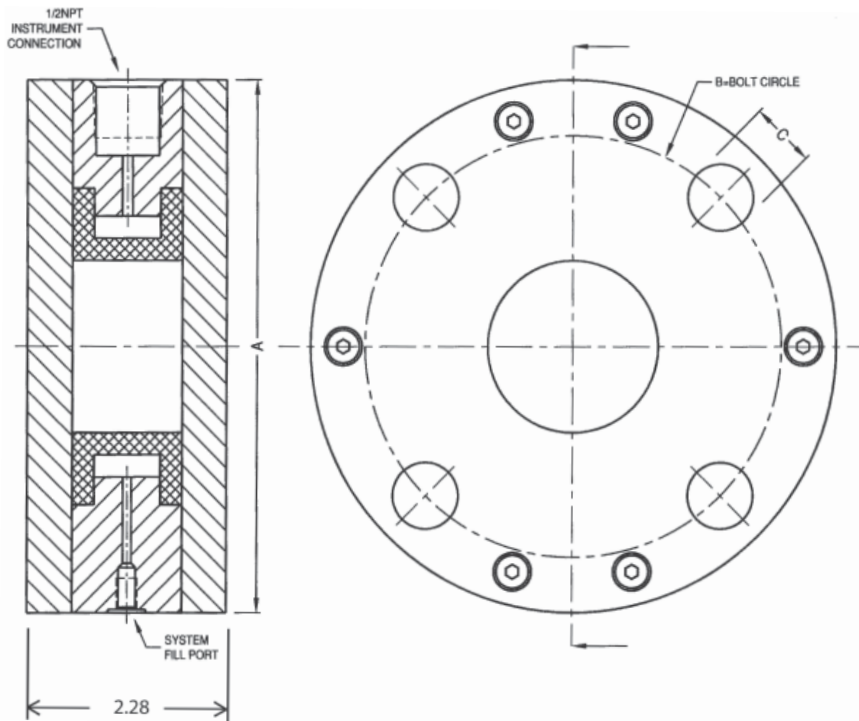
1" to 8" per ASME B16.5; other see options

Suitable Pressure Ranges

From 10 PSI to class 600 (for lower ranges consult factory)

Available Options (connections, materials, etc.)

See Selection Guide (over)



DN=NOMINAL PIPE SIZE
 CLASS=FLANGE RATING PER ASME B16.5
 X=NUMBER OF BOLT HOLES
 ALL DIMENSIONS IN INCHES
 UNLESS OTHERWISE NOTED

DN	CLASS	A	B	C	X
2"	150#	6.00	4.75	0.75	4
3"		7.50	6.00	0.75	4
4"		9.00	7.50	0.75	8
5"		10.00	8.50	0.88	8
6"		11.00	9.50	0.88	8
8"		13.50	11.75	0.88	8

DWG.#2212366-5

To determine the effects of temperature and response time in a specific application, contact the factory for an **Application Questionnaire**. The information provided will allow WIKA Technical Support to accurately model your application parameters using state-of-the-art computer simulation techniques.

ACS L981.31
 (ACS 98.05C)

Selection Guide - L981.31

L981.31,1/2X2.0-150R,SS,PU

Diaphragm Material (Diaphragm and raised face)
PU = Polurethane, PU/80 shore

Body and Flange Material
CS = Carbon steel, black painted
SS = 316 stainless steel

Flange Rating, per ASME B16.5 (See note 2)

150R = 150#RF

300R = 300#RF

600R = 600#RF

Process Connection

2.0 = 2" Pipe

3.0 = 3" Pipe

4.0 = 4" Pipe

5.0 = 5" Pipe

6.0 = 6" Pipe

Instrument Connection

1/4 = 1/4" NPT female

1/2 = 1/2" NPT female

CPL = Capillary connection (To weld capillary directly to seal)

Diaphragm Seal Design (See note 1)

L981.31 = Concrete INLINE SEAL™

Notes

1. Maximum working pressure based on flange rating per ASME B16.5.
2. Process connections to meet other sealing faces available, contact factory for availability.
3. Flanges are titanium, body is 316 stainless steel.

*Items in **bold** are available from stock (subject to prior sales).
For optional items, consult factory for current lead-time.*

Options not listed may be available, please consult factory.
Fill Fluid & Mounting options: Please reference data sheet ACS 99.MO.

THE MEASURE OF
Total Performance™

Ordering Information:

State computer part number (if available) / type number / size / range / connection size and location / options required.

Specifications given in this price list represent the state of engineering at the time of printing. Modifications may take place and the specified materials may change without prior notice

01/06



WIKA Instrument Corporation
1000 Wiegand Boulevard
Lawrenceville, Georgia 30043-5868
Tel: 770-513-8200 Fax: 770-338-5118
<http://www.wika.com> e-mail: chemseal@wika.com